

# **Charlie Oxendine**

## **1898-1943**

### **World War I**

Charlie Oxendine served in the 546<sup>th</sup> Engineer Regiment of Army during World War I. Born in Albany, Georgia, Oxendine worked as a machinist helper for the Atlantic Coast Line Railroad Company prior to his military service. Afterwards, he continued to work in the railroad industry. Oxendine died in 1943 and is buried in the Saint Augustine National Cemetery.

## TWELFTH CENSUS OF THE UNITED STATES.

285

A

State FloridaCounty Lake

## SCHEDULE No. 1.—POPULATION.

Supervisor's District No. 2Sheet No. 94Enumeration District No. 13Township or other division of county Palmer 17 PalahaName of Institution, XName of incorporated city, town, or village, within the above-named division, XWard of city, XEnumerated by me on the 14<sup>th</sup> day of June, 1900,

Palmer L. Gault

Enumerator.

LOCATION		NAME	RELATION	PERSONAL DESCRIPTION										NATIVITY			CITIZENSHIP	OCCUPATION, TRADE, OR PROFESSION	EDUCATION	SPEECH OF ENGL.																																																																																																																																																																																																																																																																																																																																																																																																																																																																																																																																																																																																
IN OTHER PLACE		of each person whose place of abode is not in this family.	Relationship of each person to the head of the family.	DATE OF BIRTH		RACE		SEX		AGE		PLACE OF BIRTH OF THIS PERSON		PLACE OF BIRTH OF FATHER	PLACE OF BIRTH OF MOTHER	Year of immigration	Year of naturalization	Place of birth of person	Place of birth of person	Place of birth of person	Place of birth of person	Place of birth of person	Place of birth of person	Place of birth of person	Place of birth of person	Place of birth of person	Place of birth of person	Place of birth of person	Place of birth of person	Place of birth of person	Place of birth of person	Place of birth of person	Place of birth of person	Place of birth of person	Place of birth of person	Place of birth of person	Place of birth of person	Place of birth of person	Place of birth of person	Place of birth of person	Place of birth of person	Place of birth of person	Place of birth of person	Place of birth of person	Place of birth of person	Place of birth of person	Place of birth of person	Place of birth of person	Place of birth of person	Place of birth of person	Place of birth of person	Place of birth of person	Place of birth of person	Place of birth of person	Place of birth of person	Place of birth of person	Place of birth of person	Place of birth of person	Place of birth of person	Place of birth of person	Place of birth of person	Place of birth of person	Place of birth of person	Place of birth of person	Place of birth of person	Place of birth of person	Place of birth of person	Place of birth of person	Place of birth of person	Place of birth of person	Place of birth of person	Place of birth of person	Place of birth of person	Place of birth of person	Place of birth of person	Place of birth of person	Place of birth of person	Place of birth of person	Place of birth of person	Place of birth of person	Place of birth of person	Place of birth of person	Place of birth of person	Place of birth of person	Place of birth of person	Place of birth of person	Place of birth of person	Place of birth of person	Place of birth of person	Place of birth of person	Place of birth of person	Place of birth of person	Place of birth of person	Place of birth of person	Place of birth of person	Place of birth of person	Place of birth of person	Place of birth of person	Place of birth of person	Place of birth of person	Place of birth of person	Place of birth of person	Place of birth of person	Place of birth of person	Place of birth of person	Place of birth of person	Place of birth of person	Place of birth of person	Place of birth of person	Place of birth of person	Place of birth of person	Place of birth of person	Place of birth of person	Place of birth of person	Place of birth of person	Place of birth of person	Place of birth of person	Place of birth of person	Place of birth of person	Place of birth of person	Place of birth of person	Place of birth of person	Place of birth of person	Place of birth of person	Place of birth of person	Place of birth of person	Place of birth of person	Place of birth of person	Place of birth of person	Place of birth of person	Place of birth of person	Place of birth of person	Place of birth of person	Place of birth of person	Place of birth of person	Place of birth of person	Place of birth of person	Place of birth of person	Place of birth of person	Place of birth of person	Place of birth of person	Place of birth of person	Place of birth of person	Place of birth of person	Place of birth of person	Place of birth of person	Place of birth of person	Place of birth of person	Place of birth of person	Place of birth of person	Place of birth of person	Place of birth of person	Place of birth of person	Place of birth of person	Place of birth of person	Place of birth of person	Place of birth of person	Place of birth of person	Place of birth of person	Place of birth of person	Place of birth of person	Place of birth of person	Place of birth of person	Place of birth of person	Place of birth of person	Place of birth of person	Place of birth of person	Place of birth of person	Place of birth of person	Place of birth of person	Place of birth of person	Place of birth of person	Place of birth of person	Place of birth of person	Place of birth of person	Place of birth of person	Place of birth of person	Place of birth of person	Place of birth of person	Place of birth of person	Place of birth of person	Place of birth of person	Place of birth of person	Place of birth of person	Place of birth of person	Place of birth of person	Place of birth of person	Place of birth of person	Place of birth of person	Place of birth of person	Place of birth of person	Place of birth of person	Place of birth of person	Place of birth of person	Place of birth of person	Place of birth of person	Place of birth of person	Place of birth of person	Place of birth of person	Place of birth of person	Place of birth of person	Place of birth of person	Place of birth of person	Place of birth of person	Place of birth of person	Place of birth of person	Place of birth of person	Place of birth of person	Place of birth of person	Place of birth of person	Place of birth of person	Place of birth of person	Place of birth of person	Place of birth of person	Place of birth of person	Place of birth of person	Place of birth of person	Place of birth of person	Place of birth of person	Place of birth of person	Place of birth of person	Place of birth of person	Place of birth of person	Place of birth of person	Place of birth of person	Place of birth of person	Place of birth of person	Place of birth of person	Place of birth of person	Place of birth of person	Place of birth of person	Place of birth of person	Place of birth of person	Place of birth of person	Place of birth of person	Place of birth of person	Place of birth of person	Place of birth of person	Place of birth of person	Place of birth of person	Place of birth of person	Place of birth of person	Place of birth of person	Place of birth of person	Place of birth of person	Place of birth of person	Place of birth of person	Place of birth of person	Place of birth of person	Place of birth of person	Place of birth of person	Place of birth of person	Place of birth of person	Place of birth of person	Place of birth of person	Place of birth of person	Place of birth of person	Place of birth of person	Place of birth of person	Place of birth of person	Place of birth of person	Place of birth of person	Place of birth of person	Place of birth of person	Place of birth of person	Place of birth of person	Place of birth of person	Place of birth of person	Place of birth of person	Place of birth of person	Place of birth of person	Place of birth of person	Place of birth of person	Place of birth of person	Place of birth of person	Place of birth of person	Place of birth of person	Place of birth of person	Place of birth of person	Place of birth of person	Place of birth of person	Place of birth of person	Place of birth of person	Place of birth of person	Place of birth of person	Place of birth of person	Place of birth of person	Place of birth of person	Place of birth of person	Place of birth of person	Place of birth of person	Place of birth of person	Place of birth of person	Place of birth of person	Place of birth of person	Place of birth of person	Place of birth of person	Place of birth of person	Place of birth of person	Place of birth of person	Place of birth of person	Place of birth of person	Place of birth of person	Place of birth of person	Place of birth of person	Place of birth of person	Place of birth of person	Place of birth of person	Place of birth of person	Place of birth of person	Place of birth of person	Place of birth of person	Place of birth of person	Place of birth of person	Place of birth of person	Place of birth of person	Place of birth of person	Place of birth of person	Place of birth of person	Place of birth of person	Place of birth of person	Place of birth of person	Place of birth of person	Place of birth of person	Place of birth of person	Place of birth of person	Place of birth of person	Place of birth of person	Place of birth of person	Place of birth of person	Place of birth of person	Place of birth of person	Place of birth of person	Place of birth of person	Place of birth of person	Place of birth of person	Place of birth of person	Place of birth of person	Place of birth of person	Place of birth of person	Place of birth of person	Place of birth of person	Place of birth of person	Place of birth of person	Place of birth of person	Place of birth of person	Place of birth of person	Place of birth of person	Place of birth of person	Place of birth of person	Place of birth of person	Place of birth of person	Place of birth of person	Place of birth of person	Place of birth of person	Place of birth of person	Place of birth of person	Place of birth of person	Place of birth of person	Place of birth of person	Place of birth of person	Place of birth of person	Place of birth of person	Place of birth of person	Place of birth of person	Place of birth of person	Place of birth of person	Place of birth of person	Place of birth of person	Place of birth of person	Place of birth of person	Place of birth of person	Place of birth of person	Place of birth of person	Place of birth of person	Place of birth of person	Place of birth of person	Place of birth of person	Place of birth of person	Place of birth of person	Place of birth of person	Place of birth of person	Place of birth of person	Place of birth of person	Place of birth of person	Place of birth of person	Place of birth of person	Place of birth of person	Place of birth of person	Place of birth of person	Place of birth of person	Place of birth of person	Place of birth of person	Place of birth of person	Place of birth of person	Place of birth of person	Place of birth of person	Place of birth of person	Place of birth of person	Place of birth of person	Place of birth of person	Place of birth of person	Place of birth of person	Place of birth of person	Place of birth of person	Place of birth of person	Place of birth of person	Place of birth of person	Place of birth of person	Place of birth of person	Place of birth of person	Place of birth of person	Place of birth of person	Place of birth of person	Place of birth of person	Place of birth of person	Place of birth of person	Place of birth of person	Place of birth of person	Place of birth of person	Place of birth of person	Place of birth of person	Place of birth of person	Place of birth of person	Place of birth of person	Place of birth of person	Place of birth of person	Place of birth of person	Place of birth of person	Place of birth of person	Place of birth of person	Place of birth of person	Place of birth of person	Place of birth of person	Place of birth of person	Place of birth of person	Place of birth of person	Place of birth of person	Place of birth of person	Place of birth of person	Place of birth of person	Place of birth of person	Place of birth of person	Place of birth of person	Place of birth of person	Place of birth of person	Place of birth of person	Place of birth of person	Place of birth of person	Place of birth of person	Place of birth of person	Place of birth of person	Place of birth of person	Place of birth of person	Place of birth of person	Place of birth of person	Place of birth of person	Place of birth of person	Place of birth of person	Place of birth of person	Place of birth of person	Place of birth of person	Place of birth of person	Place of birth of person	Place of birth of person	Place of birth of person	Place of birth of person	Place of birth of person	Place of birth of person	Place of birth of person	Place of birth of person	Place of birth of person	Place of birth of person	Place of birth of person	Place of birth of person	Place of birth of person	Place of birth of person	Place of birth of person	Place of birth of person	Place of birth of person	Place of birth of person	Place of birth of person	Place of birth of person	Place of birth of person	Place of birth of person	Place of birth of person	Place of birth of person	Place of birth of person	Place of birth of person	Place of birth of person	Place of birth of person	Place of birth of person	Place of birth of person	Place of birth of person	Place of birth of person	Place of birth of person	Place of birth of person	Place of birth of person	Place of birth of person	Place of birth of person	Place of birth of person	Place of birth of person	Place of birth of person	Place of birth of person	Place of birth of person	Place of birth of person	Place of birth of person	Place of birth of person	Place of birth of person	Place of birth of person	Place of birth of person	Place of birth of person	Place of birth of person	Place of birth of person	Place of birth of person	Place of birth of person	Place of birth of person	Place of birth of person	Place of birth of person	Place of birth of person	Place of birth of person	Place of birth of person	Place of birth of person	Place of birth of person	Place of birth of person	Place of birth of person	Place of birth of person	Place of birth of person	Place of birth of person	Place of birth of person	Place of birth of person	Place of birth of person	Place of birth of person	Place of birth of person	Place of birth of person	Place of birth of person	Place of birth of person	Place of birth of person	Place of birth of person	Place of birth of person	Place of birth of person	Place of birth of person	Place of birth of person	Place of birth of person	Place of birth of person	Place of birth of person	Place of birth of person	Place of birth of person	Place of birth of person	Place of birth of person	Place of birth of person	Place of birth of person	Place of birth of person	Place of birth of person	Place of birth of person	Place of birth of person	Place of birth of person	Place of birth of person	Place of birth of person	Place of birth of person	Place of birth of person	Place of birth of person	Place of birth of person	Place of birth of person	Place of birth of person	Place of birth of person	Place of birth of person	Place of birth of person	Place of birth of person	Place of birth of person	Place of birth of person	Place of birth of person	Place of birth of person	Place of birth of person	Place of birth of person	Place of birth of person	Place of birth of person	Place of birth of person	Place of birth of person	Place of birth of person	Place of birth of person	Place of birth of person	Place of birth of person	Place of birth of person	Place of birth of person	Place of birth of person	Place of birth of person	Place of birth of person	Place of birth of person	Place of birth of person	Place of birth of person	Place of birth of person	Place of birth of person	Place of birth of person	Place of birth of person	Place of birth of person





# Marriage License

State of Florida, Duval County

TO ANY MINISTER OF THE GOSPEL OR ANY OFFICER LEGALLY AUTHORIZED TO SOLEMNIZE THE RITES OF MATRIMONY.

WHEREAS, Application having been made to the County Judge of Duval County, of the State of Florida, for a License for Marriage, and it appearing to the satisfaction of the said County Judge that no legal impediment exist to the Marriage now sought to be solemnized, there are therefore to authorize you to unite **IN THE HOLY ESTATE OF MATRIMONY**

*Charlie Oxendine* (21) and  
*Helen Maxwell* (19) c

and that you make return of same, duly certified under your hand, to the County Judge aforesaid.

WITNESS, My name as County Judge, and the seal of said Court, at the Court House in Jacksonville, this 20th day of March A. D. 1917-

(SEAL)

*H. B. Phillips*, County Judge.  
I certify that the within named *Charlie Oxendine* and *Helen Maxwell*

were by me, the undersigned, duly united in the Holy Bonds of Matrimony, by the authority of the within License.

Done this 20th day of March A. D. 1917-

*W. T. Cowan*, (Minister)

Witnesses to Ceremony:

*Mary Carter*

Recorded this 20th day of April A. D. 1917-

*H. B. Phillips*, County Judge.

“Charlie Oxendine.” Florida County Marriage Records.  
Marriage of Charles Oxendine and Helen Maxwell.  
March 20, 1917 in Duval County, FL.

WRITE PLAINLY, WITH UNFADING INK—THIS IS A PERMANENT RECORD

**State Board of Health of Florida**  
BUREAU OF VITAL STATISTICS

1 PLACE OF DEATH

County Duval CERTIFICATE OF DEATH FILE NO. 3722

Precinct (Write name, not number) \_\_\_\_\_ REGISTRATION DISTRICT NO. 1301 Registered No. \_\_\_\_\_  
or Inc. Town \_\_\_\_\_ PRIMARY REGISTRATION DIST. NO. 13511  
or City JACKSONVILLE, FLA. (No. 1305 West Duval St. \_\_\_\_\_ Ward) [If death occurred in a hospital or institution, give its NAME instead of street and number.]

\* FULL NAME Infant Oxendine

PERSONAL AND STATISTICAL PARTICULARS			MEDICAL CERTIFICATE OF DEATH	
SEX <b>Female</b>	COLOR OR RACE <b>Colored</b>	SINGLE, MARRIED, WIDOWED, OR DIVORCED <b>Single</b> <small>[Write the word]</small>	DATE OF DEATH <b>April 29 1917</b> <small>(Month) (Day) (Year)</small>	
DATE OF BIRTH <b>Apr 29 1917</b> <small>(Month) (Day) (Year)</small>			I HEREBY CERTIFY, That I attended deceased from _____, 191 _____ to _____, 191 _____ <small>(that I was alive on _____, 191 _____)</small>	
AGE <b>SB</b> yrs. _____ mos. _____ ds. _____ <small>If LESS than 1 day, _____ hrs.</small>			CAUSE OF DEATH* was as follows: <b>Still-born (No medical attendant-Katie Middleton, Midwife, in attendance)</b>	
OCCUPATION (a) Trade, profession, or particular kind of work <b>None</b> (b) General nature of industry, business, or establishment in which employed (or employer)			Contributory (Secondary) _____ (Signed) <u>Acting Health Officer</u> 191 _____ (Address) _____ * State the DISEASE CAUSING DEATH, or, in deaths from VIOLENT CAUSES state (1) MEANS OF INJURY; and (2) whether ACCIDENTAL, SUICIDAL, or HOMICIDAL.	
BIRTHPLACE (State or country) <b>Jax. Fla.</b>				
NAME OF FATHER <b>Charlie Oxendine</b>				
PARENTS	BIRTHPLACE OF FATHER (State or country) <b>Albany, Ga.</b>			1 <sup>st</sup> LENGTH OF RESIDENCE (FOR HOSPITALS, INSTITUTIONS, TRANSIENTS, OR RECENT RESIDENTS) At place of death _____ yrs. _____ mos. _____ ds. In the State _____ yrs. _____ mos. _____ ds. Where was disease contracted, if not at place of death? _____ Former or usual residence _____
	MAIDEN NAME OF MOTHER <b>Helen Maxwell</b>			
	BIRTHPLACE OF MOTHER (State or country) <b>Savannah, Ga.</b>			
14 THE ABOVE IS TRUE TO THE BEST OF MY KNOWLEDGE (Informant) <b>Rosa Williams</b> (Address) <b>Jax</b>				
15 Filed <b>Apr. 30 1917</b> <u>Acting Registrar</u> REGISTRAR			16 PLACE OF BURIAL OR REMOVAL <b>Memorial Cemetery</b> 2 <sup>nd</sup> UNDERTAKER <b>Geter &amp; Baker</b> DATE OF BURIAL OR REMOVAL <b>May 3, 1917</b> ADDRESS <b>City</b>	

Form V. S. No. 4 60m 3-13-16 D.

“Charlie Oxendine.” Florida Death Certificates.  
Death of Stillborn Daughter in 1917.

VA



U.S. Department  
of Veterans Affairs  
National Cemetery  
Administration

vlp.cah.ucf.edu



Department  
of History

UNIVERSITY OF CENTRAL FLORIDA

Form 1		REGISTRATION CARD		No. 476
1	Name in full	Charles Oxendine		Age, in yrs. 21
2	Home address	1305 W. Duval, Jacksonville, Fla.		
3	Date of birth	April 13 1895		
4	Are you (1) a natural-born citizen, (2) a naturalized citizen, (3) an alien, (4) or have you declared your intention (specify which)?	natural born citizen		
5	Where were you born?	Albany, Ga.		
6	If not a citizen, of what country are you a citizen or subject?	✓		
7	What is your trade, occupation, or office?	15 machinist helper		
8	By whom employed?	Atlantic Coast Line R.R. Co.		
	Where employed?	Jacksonville, Fla.		
9	Have you a father, mother, wife, child under 12, or a sister or brother under 12, solely dependent on you for support (specify which)?	wife		
10	Married or single (which)?	married Race (specify which)? negro		
11	What military service have you had? Rank	none; branch; years; Nation or State		
12	Do you claim exemption from draft (specify grounds)?	yes, wife's support		
I affirm that I have verified above answers and that they are true.				
Charles Oxendine (Signature or mark)				

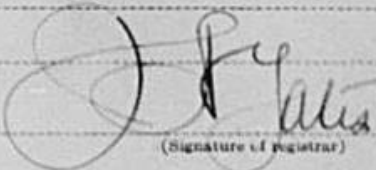
“Charlie Oxendine.” WWI Draft Registration Card. (Front)  
Oxendine worked as a machinist helper for the Atlantic Coast Line Railroad Company.



**REGISTRAR'S REPORT**

1	Tall, medium, or short (specify which)? <u>tall</u>	Slender, medium, or stout (which)? <u>Slender</u>
2	Color of eyes? <u>black</u>	Color of hair? <u>black</u> Bald? <u>no</u>
3	Has person lost arm, leg, hand, foot, or both eyes, or is he otherwise disabled (specify)? <u>no</u>	

I certify that my answers are true, that the person registered has read his own answers, that I have witnessed his signature, and that all of his answers of which I have knowledge are true, except as follows:

  
 (Signature of Registrar)

Precinct 8

City or County Jacksonville

State Florida

June 5, 1917  
 (Date of registration)

9-2-15.A

2969

“Charlie Oxendine.” WWI Draft Registration Card. (Back)  
 Oxendine registered in Jacksonville, FL on June 5, 1917.

WRITE PLAINLY, WITH UNFADING INK—THIS IS A PERMANENT RECORD

N. B.—Every item of information should be carefully supplied. AGE should be stated EXACTLY. PHYSICIANS should state CAUSE OF DEATH in plain terms, so that it may be properly classified. Exact statement of OCCUPATION is very important. See instructions on back of certificate.

State Board of Health of Florida		BUREAU OF VITAL STATISTICS	
1 PLACE OF DEATH		CERTIFICATE OF DEATH	
County <u>Duval</u>	PRECINCT (Write name, not number) _____	REGISTRATION DISTRICT NO. <u>1301</u>	FILE NO. <u>1552-B 707 Jefferson</u>
or Inc. Town _____	or City <u>Jacksonville</u> (No. <u>1117</u> <u>Corning</u> )	PRIMARY REGISTRATION DIST. NO. <u>13511</u>	Registered No. <u>1552-B</u>
2 FULL NAME <u>Infant of Charlie Oxendine</u>		[If death occurred in a hospital or institution, give its NAME instead of street and number.]	
PERSONAL AND STATISTICAL PARTICULARS		MEDICAL CERTIFICATE OF DEATH	
3 SEX <u>male</u>	4 COLOR OR RACE <u>Colored</u>	5 SINGLE, MARRIED, WIDOWED, OR DIVORCED <u>Single</u>	6 DATE OF DEATH <u>February 26, 1918</u>
7 DATE OF BIRTH <u>Feb 26, 1918</u>	8 AGE <u>30</u> yrs. mos. ds. or min. ?	I HEREBY CERTIFY, That I attended deceased from _____, 191____, to _____, 191____,	
9 OCCUPATION (a) Trade, profession, or particular kind of work <u>none</u>	(b) General nature of industry, business, or establishment in which employed (or employer) _____	that I last saw h. _____ alive on _____, 191____,	
10 BIRTHPLACE (State or country) <u>Jax Flo</u>	11 NAME OF FATHER <u>Charlie Oxendine</u>	and that death occurred, on the date stated above, at <u>9 A.M.</u>	
12 BIRTHPLACE OF FATHER (State or country) <u>Lo</u>	13 MAIDEN NAME OF MOTHER <u>Hellen Maxwell</u>	The CAUSE OF DEATH* was as follows: <u>Still-born - (No medical attendant - midwife in attendance)</u>	
14 BIRTHPLACE OF MOTHER (State or country) <u>Lo</u>	15 THE ABOVE IS TRUE TO THE BEST OF MY KNOWLEDGE (Informant) <u>Hellen Oxendine</u>	(Duration) _____ yrs. _____ mos. _____ ds.	
(Address) <u>1117 Corning St</u>	16 FILED <u>Feb 27, 1918</u> <u>C. Purdy</u> REGISTRAR	(Signed) <u>Wm W MacDonell</u> Health Officer.	
Form V. S. No. 4—60m 3-13-16 D		* State the DISEASE CAUSING DEATH, or, in deaths from VIOLENT CAUSES state (1) MEANS OF INJURY; and (2) whether ACCIDENTAL, SUICIDAL, or HOMICIDAL.	
		17 LENGTH OF RESIDENCE (FOR HOSPITALS, INSTITUTIONS, TRANSIENTS, OR RECENT RESIDENTS)	
		At place of death _____ yrs. _____ mos. _____ ds. In the State _____ yrs. _____ mos. _____ ds.	
		Where was disease contracted, if not at place of death? _____	
		Former or usual residence _____	
		18 PLACE OF BURIAL OR REMOVAL <u>Hollywood Cemetery</u>	DATE OF BURIAL OR REMOVAL <u>2-28-1918</u>
		19 UNDERTAKER <u>H. Holmes &amp; Co</u> City _____	

“Charlie Oxendine.” Florida Death Certificates.  
Death of Stillborn Son in 1918.

VA



U.S. Department  
of Veterans Affairs  
National Cemetery  
Administration

vlp.cah.ucf.edu



Department  
of History

UNIVERSITY OF CENTRAL FLORIDA



FORM 1029 PMGO.

SHEET No. 13

ORIGINAL.

When completed to be mailed by  
Military Authorities to the Provost  
Marshal General, Washington, D. C.

Local Board for Division No. 3  
City of Jacksonville, State of Fla.  
120 W. Bay St., Room 12, Jacksonville, Fla.

Date, Aug 4, 1918.

The selected men herein described, having been inducted into military service on August 4, 1918  
(Date.)  
have this date been entrained for Camp Devens, Ayer, Mass  
(Camp or Station.)  
This statement consists of 19 sheets.

1 Order No.	2 Serial No.	3 NAME.	4 Call No.	5 Primary Industry.	6 Classification.					7 Failed to report to Military Authorities.
					I	II	III	IV	V	
2951	834	Austin Romeo Jr	1000	AutoDriver	A					
2961	1708	Will Foster	"	Teamster	I					
2966	1552	Will Nelson	"	Laborer	A					
2969	1945	Charles Oxendine	"	Laborer	A					
2972	1629	John Henderson	"	Musician	A					
2974	951	William Lewis	"	RR Fireman	I					
2977	558	Eddie Morant	"	AutoDriver	A					
2978	5061	Eugene Dyson	"	Waiter	A					
2981	3348	John Edwin Gardner	"	Dhauffeur	A					
2996	97	Chester Bryant	"	Cook	I					
2999	3315	Ernest Johnson	"	Laborer	A					
3001	1949	John Walker	"	Teamster	A					
3002	1697	Robert Walker	"	Laborer	A					
3004	2264	Boisey Legge	"	Musician	I					
3005	219	Charley Battle	"	Sawmilling	I					
3006	2499	Conover L. Cox	"	Teamster	I					
3009	2155	G. A. Harris	"	Laborer	A					
3020	3705	Susi Emry Nolen	"	Laborer	I					
3023	45	Jose Romero	"	Cigarmaker	A					
3024	1535	Willie Mack	"	Cooper	I					
3028	2080	James Foreman	"	Cook	A					
3029	1246	Willie Mitchell	"	Truckdriver	A					
3033	1135	Willie Cheves	"	Basketmaker	I					
3037	3045	James J.H. Williams	"	Chauffeur	A					
3047	2487	Will Stringer	"	Cook	I					

522

213

"Charlie Oxendine." List of Men Order to Report.  
Oxendine sent to Camp Devens, MA on August 4, 1918.

VA



U.S. Department  
of Veterans Affairs  
National Cemetery  
Administration

vlp.cah.ucf.edu



Department  
of History

UNIVERSITY OF CENTRAL FLORIDA

Sheet No. 7 HEADQUARTERS PORT OF EMBARKATION, HOBOKEN, NEW JERSEY  
 3rd. Class PASSENGER LIST OF ORGANIZATIONS AND COUNCILS

INSTRUCTIONS FOR FILLING OUT THIS FORM

Separate lists of FIVE COPIES EACH, will be filled out by each company or detachment commander as follows:  
 1st List: Officers arranged according to rank, Army Field Clerks, Field Clerks Q. M. C.; Nurses and Civilian Employees. Names should be numbered consecutively beginning with No. 1.  
 2d List: Non-commissioned Officers above Grade 17, (Par. 9, A. R.) arranged according to grade.  
 3d List: Enlisted men below Grade 16, (Par. 9, A. R.) arranged according to the usual formation of the Company, that is, by squads. These names should be numbered consecutively beginning with No. 1.

To be filled in by Organization: Give full name of organization including company and regimental designation  
 To be filled in by Embarkation Personnel Adjutant: Name of Transport or Commercial Steamer

Each ENGINEERS SERVICE BATTALION  
 CASE A A HUBBARD VA  
 SCOTIA SEPT 25 1918  
 Item Number: 41  
 Date of Sailing: 1-26-18  
 Port: eth NEW YORK CHASE

No.	NAME (Family name followed by Christian name and middle initial, same as on service record, Army Serial Number immediately under each name.)	Rank & Corps. Ex file: Capt. OWC	Organization	NOTIFY IN CASE OF EMERGENCY (Give name in full, for example: Mrs. Mary A. Smith)	Relationship	ADDRESS (Number, Street, City and State) Do not abbreviate.
106	MEYERS JULIUS 4185151	FVT	CO A	MR JULIUS MEYERS SR	FATH	COLEMAN CO S C
107	MYERS ROYAL E 4182337	FVT	ENGI- HARRIS SERVICE	MISS LILLIAN LANCASTER	FRIEND	20 LADD / ST SPRINGFIELD MASS
108	MYLES IRIS 4186030	FVT	BATT- VALIEN	MRS ELVINA C MYLES	MOTH	1307 W DUVAL ST JACKSONVILLE FLA
109	NEIL CHARLES 4185445	FVT		MR DAN NEIL	FATH	ORLANDO FLA
110	NOLAN EUGENE E 4184307	FVT		MRS HATTIE T NOLAN	WIFE	1044 W ASHLEY ST JACKSONVILLE FLA
111	NORTON WILLIAM 4185666	FVT		MRS ADA V NORTON	WIFE	1505 FRANKLIN ST JACKSONVILLE FLA
112	OXENDINE CHARLES 4184137	FVT		MRS MARY W OXENDINE	MOTH	1305 W DUVAL ST JACKSONVILLE FLA
113	PARKER HEIL G 418 2095	FVT		MRS ADA E PARKER	WIFE	7-A RIVERVIEW AVE CAMBRIDGE MASS
114	PATTERSON CHARLES 4186320	FVT		MISS MINDECCA BRISCOL	FRIEND	LUKENS FLA
115	/ PATTERSON DAVID JR 4185740	FVT		MES. MISS LUIA JOHNSON	SIS	MICANOPY FLA
116	PERRINS JOHNNIE 4185714	FVT		MRS MARTHA F PERKINS	WIFE	MAINEVILLE FLA
117	<del>PERKINS CHARLES E 4186034</del>	<del>FVT</del>	<del></del>	<del>MRS MARY E PERKINS</del>	<del>WIFE</del>	<del>MAINEVILLE FLA</del>
118	PERRY DONNELL 4186272	FVT		MR PRINCE PERRY	FATH	LUKE FLA APO #1 BOX 51
119	<del>PETERSON CHARLES E 4186000</del>	<del>FVT</del>	<del></del>	<del>MRS LIZZIE E PETERSON</del>	<del>WIFE</del>	<del>220 N MOORE ST BALTIMORE MD</del>
120	PETTERAY WILL 4185535	FVT		MRS LIZZIE E PETTERAY	WIFE	BROOKVILLE FLA
121	PHILLIPS ARTHUR E 2599862	FVT		MR ARTHUR PHILLIPS	FATH	220 N MOORE ST BALTIMORE MD
122	<del>PHILLIPS ARTHUR E 4183302</del>	<del>FVT</del>	<del></del>	<del>MRS LIZZIE E PHILLIPS</del>	<del>WIFE</del>	<del>220 N MOORE ST BALTIMORE MD</del>
123	PINEETT DOCK 4186310	FVT		MISS SALLIE GRINE	COUSIN	NET BROOK FLA

Disposition:  
 Five copies of this list to be handed to the representative of embarkation personnel adjutant's office at gangplank by which company embarks.

(Signature of Company Commander.)  
 (Rank)

DECLASSIFIED  
 Authority NND 785096

“Charlie Oxendine.” Army Transport Passenger Lists.  
 Oxendine aboard the *USS Scotian* from New York to France.  
 Listed his mother Mary Oxendine as his emergency contact.



U.S. Department  
of Veterans Affairs  
National Cemetery  
Administration

vlp.cah.ucf.edu



Department  
of History

UNIVERSITY OF CENTRAL FLORIDA



Sheet No. 5  
3RD Class

PASSENGER LIST OF ORGANIZATIONS AND CASUALS  
RETURNING TO THE UNITED STATES

INSTRUCTIONS  
Separate lists of TWELVE COPIES EACH will be accomplished by each company or detachment commander as follows:  
1st Class: Officers arranged according to Rank, then Army Field Clerks, Field Clerks O. M. C., Civilian Employees.  
Names to be numbered consecutively beginning with No. 1.  
2nd Class: Non-commissioned Officers down to and including Color Sergeant (See A. R. Par. 9).  
3rd Class: All enlisted men below Color Sergeant (A. R. Par. 9), arranged according to usual formation of the Company, that is, BY SQUADS.  
This form when used to list CASUAL military passengers will be accomplished in like manner, but within each class all casualties will be sub-grouped using the following 5 digits with reference to the reason for their return, not more than one digit sub-group being listed on the same sheet: (1) Deceased, (2) Sick and Wounded, (3) Prisoners, (4) For Duty, (5) On Leave without Pay, (6) Miscellaneous. The word "Casuals" and the name of the group will be entered in the space provided for name of organization, and the Embarkation Personnel Adjutant will sign his name in the space provided for the signature of organization commander.

To be filled in by company or detachment commander  
Give full name of organization including company and regimental designation  
Name of vessel  
Port of sailing  
Date of departure  
To be filled in by Embarkation Personnel Adjutant, A. E. F.  
To be filled in by Debarcation Personnel Adjutant, U. S. A.  
Port of Arrival  
Date of Arrival

COMPANY A 546TH ENGINEERS  
SERVICE BATTALION COLORED

No. NAME AND SERIAL NUMBER  
HENDERSON, HARRIS F.  
133457

Rank & Army Grade  
Pvt  
Engns

Organization  
Company A  
Detachment

NOTIFY IN CASE OF EMERGENCY  
(Give name in full for ex-ample, Mrs. Mary A. Smith.)

Relationship  
Father  
Mother

Address  
(Number, Street, City and State)  
Do not abbreviate.

Leave blank in space between entries. All typewriting must be in CAPITAL LETTERS.

(COLORED)

53 JONES WILLIE 4186553 PVT CO A ENGRS 546TH SERV BN MRS LOUISE W JONES WIFE 1612 MORGAN STREET JACKSONVILLE FLORIDA 264

54 MC CLAIN HAYS 4186044 PVT CO A ENGRS 546TH SERV BN LOYD W MC CLAIN BROTHER DADE CITY FLORIDA

55 NOLAN SUSIE E 4184307 PVT CO A ENGRS 546TH SERV BN MRS HATTIE F NOLAN WIFE 1044 WEST ASHLEY STREET JACKSONVILLE FLORIDA

56 FOUNTAINE JAMES M 4182472 PVT CO A ENGRS 546TH SERV BN MRS LAURA S HUGGINS MOTHER 11 KINWOOD STREET CAMBRIDGE MASSACHUSETTS

57 BROWN ANDERSON 4181893 PVT CO A ENGRS 546TH SERV BN MRS MARY B FORD SISTER COSCOB CONNECTICUT

58 BOONE WILLIE 4186388 CORP CO A ENGRS 546TH SERV BN MRS ELLEN BOONE MOTHER DUNELLON FLORIDA

59 MILLER CLAYTON W 4182205 PVT CO A ENGRS 546TH SERV BN WILLIAM BRADSHAW GRANDFATHER R F D 2 THOMASTON CONNECTICUT

60 LEE WILLIAM R 4181635 PVT CO A ENGRS 546TH SERV BN MRS JENNIE T LEE MOTHER WHITESBORO NEW JERSEY

61 MEARS MILRY E 4183884 PVT CO A ENGRS 546TH SERV BN MRS MARY P. MEARS MOTHER FLORIDA AVENUE LAKELAND FLORIDA

62 HOUSTON EMANUEL 4186105 PVT CO A ENGRS 546TH SERV BN MRS CARY S HOUSTON WIFE LATTEY FLORIDA

63 OXENDINE CHARLIE 4184137 PVT CO A ENGRS 546TH SERV BN MRS MARY W OXENDINE MOTHER 1305 WEST DUVAL STREET JACKSONVILLE FLORIDA  
Camp Alexander Newport News, Va.

64 DAVIS LEO 4183873 PVT CO A ENGRS 546TH SERV BN MRS HENRIETTA DAVIS WIFE 639 SPRUCE STREET JACKSONVILLE FLORIDA

65 HICKS BIES 4185451 PVT CO A ENGRS 546TH SERV BN MRS LOUISE HICKS WIFE GARDNER FLORIDA

AUTHORITY: TROOP MOVEMENT ORDER NO 187 HQRS A. E. C. June 8, 1919

Total Officers.....  
Total Nurses.....  
Total Field Clerks.....  
Total Civilians.....  
Total Enlisted Men.....  
Total Passengers.....  
This recapitulation to be made on first sheet only

A Total of Twelve Copies of Passengers List are required distributed as follows:  
5 to Personnel Adjutant Port of Embarkation, A. E. F.  
5 to Personnel Adjutant Port of Debarcation, U. S. A.  
1 Retained by Company or Unit Commander

Signature of Organization Commander  
Rank

DECLASSIFIED  
Authority NND 785095

“Charlie Oxendine.” Army Transport Passenger Lists.  
Oxendine aboard the *USS Virginian* from Saint-Nazaire, France to the US.  
Listed his mother Mary Oxendine as his emergency contact.



U.S. Department  
of Veterans Affairs  
National Cemetery  
Administration

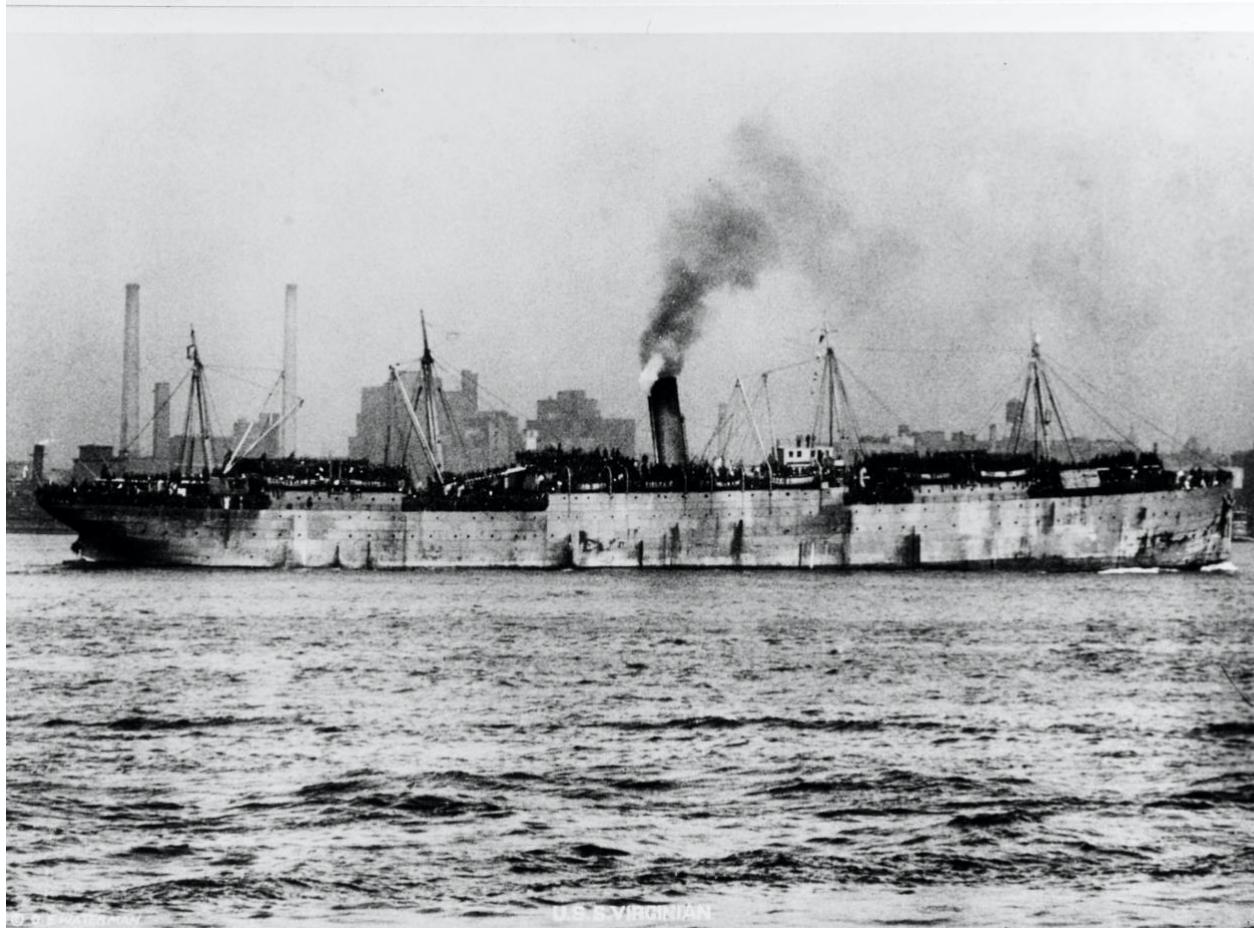
vlp.cah.ucf.edu



Department  
of History

UNIVERSITY OF CENTRAL FLORIDA





“Charlie Oxendine.” *USS Virginian*.  
Ship to transported Oxendine and his unit from France to the US.

D31 Oxendine Charlie 4,184,137 1  
(Surname) (Christian name) (Army serial number) \* White \* Colored.

Residence: 1305 W Buval St Jacksonville FLORIDA  
(Street and house number) (Town or city) (County) (State)

\* ~~Inducted at~~ Inducted at 1B 3 Jacksonville Fla Aug 4/18  
on

Place of birth: Albany Ga Age or date of birth: APR 13 1898  
Age or date of birth

Organizations served in, with dates of assignments and transfers:  
 Co A 546 Engr to disch

Grades, with date of appointment: Pvt

Engagements:

Wounds or other injuries received in action: None.

Served overseas from † Sept 25/18 to † June 25/19 from † to †

Honorably discharged on demobilization July 1/19, 19

In view of occupation he was, on date of discharge, reported 0 per cent disabled.

Remarks:

Form No. 724-1, A. G. O. \*Strike out words not applicable. † Dates of departure from and arrival in the U. S.

“Charlie Oxendine.” WWI Service Card.  
 Military Service: August 4, 1918 to July 1, 1919.  
 Oxendine served overseas with the 546<sup>th</sup> Engineers.

## The Franz Safe and Lock Co.

DIEBOLD FIRE AND BURGLAR-PROOF SAFES,  
VAULTS AND SAFE DEPOSIT BOXES  
TELEPHONE 868 27 and 29 SOUTH HOGAN ST.

Loans Negotiated  
RENTS COLLECTED  
PHONE 506  
**CHAS. W. KINNE**  
FIRE INSURANCE  
REAL ESTATE  
1012 Atlantic Nat'l Bank Bldg

990 (1922) R. L. POLK & CO.'S  
Owens Cama C, student, r 418 Donald  
Owens Charles W, city fireman, r 904 W Monroe  
Owens Claude H (Bertha), clk Swift & Co, h 626 W Duval  
\*Owens Edward, lab, h 1108 Griffin av  
\*Owens Edward (Kate), lab, h 1702 Prince  
\*Owens Edward (Mary), lab, h 22 Richard  
Owens Edwin T, office eng City Eng Dept, r 418 Donald  
\*Owens Eli (Dorothy), lab, r 1018½ W Church  
Owens Elijah, lab, r 115 Forest  
Owens Frank, clk T M Conepa, r 915 Newnan  
Owens Fred L (Violet B), chauf, h 1803 Hill  
Owens Fred W, ship clk, r 147 Schofield  
Owens Gary M, mech, r 147 Schofield  
\*Owens George, barber, r 813 Griffin av  
\*Owens Georgia, maid, r 1105 W Duval  
\*Owens Grant (Sadie), porter, r 618 Johnson  
\*Owens Guy (Celia), lab, r 1641 Evergreen av  
\*Owens James (Florence), lab, h 324 North  
Owens James H (Cama C), acct, h 418 Donald  
\*Owens John (Annie B), lab, h 1514 Madison  
Owens John B (Martha), h 1 King av  
Owens Joseph S, lab, r 906 Minerva pl, S J  
Owens J A (wid J W), r 890 Lackawanna av  
Owens Laura, tchr Ortega School, r 418 Donald  
Owens Lecie, clk Kelly-Springfield Tire Co, r Y W C A

### WILLIAM KNAUER Real Estate, Loans

BUSINESS OPPORTUNITIES NOTARY PUBLIC  
Office: Room 211 Professional Building Phone 1976  
Office Hours: 11 a.m. to 1 p.m. 7 p.m. to 8 p.m.

\*Owens Lillie O, Indrs, h 759 W Beaver  
Owens Lois, clk H & W B Drew Co, h 720 Laura  
Owens Mary I, propr Hotel Chalfont, h 12 W Ashley  
Owens Mary T (wid Wm), h 906 Minerva pl, S J  
Owens Ogden A (Alice), carp, h 30 E 1st  
Owens Oscar L, millwright Gibbs Gas Eng Co, res Hogan, Fla  
\*Owens Roscoe, bellboy, r 707 Jefferson  
\*Owens Sophie, Indrs, h 121 Park av  
\*Owens Susie, hair drsr, r 741A W Ashley  
\*Owens Samuel W (Mary), r 1601 Myrtle av  
Owens Wade W, clk F E C Ry, r 906 Minerva pl, S J  
\*Owens Wm (Polly), lab, h 426 Oak  
\*Owens Wm, pdlr, h W 28th n w cor Powell av  
Owens Wm J, clk Porter Clo Co, r 147 Schofield  
Owens Wm L, chauf Pen Naval Stores Co  
Owens Wm R, special agt S A L, r 1 King av  
\*Oxendine Charles (Helen), lab, r 1117 Corning  
\*Oxendine Edward A, cigar mkr, h n s W 21st 1 e Moncrief rd  
\*Oxendine Edward A jr, cigar mkr, r E A Oxendine  
\*Oxendine Hilliard A (Tillie), grocer 2316 Davis, h do  
\*Oxendine Jesse, h 18 Greeley  
\*Oxendine Julius, bellman, r E A Oxendine  
Oxford Cora, r 638 Park av  
Oxford Edward R, clk Atlantic Natl Bank, r 1752 Pearl  
Oxford Emma C (wid T B), h 1451 Gilmore

**E. G. Golder**  
303 MAIN STREET

Plumbing  
Heating  
Refrigeration  
Electric  
Painting

Phones  
Office, Bell 6413  
Works, Bell 2279

**PARK HOTEL**  
206 Hogan; Tel. 2040  
**Hot and Cold Water**  
**Steam Heat In Every Room**

“Charlie Oxendine.” Jacksonville City Directory (1922).  
Oxendine listed as a laborer in Jacksonville, FL.



U.S. Department  
of Veterans Affairs  
National Cemetery  
Administration

vlp.cah.ucf.edu



Department  
of History

UNIVERSITY OF CENTRAL FLORIDA



**Marriage License**  
CENTRAL BUREAU OF VITAL STATISTICS

C. J. No. \_\_\_\_\_

**State of Florida,** \_\_\_\_\_ **County**

To any Minister of the Gospel, or any Officer Legally Authorized to Solemnize the Rite of Matrimony:

Whereas, Application having been made to the County Judge of \_\_\_\_\_ County, of the State of Florida, for a license for marriage, and it appearing to the satisfaction of said County Judge that no legal impediments exist to the marriage now sought to be solemnized, These are, therefore, To authorize you to unite in the

**Holy Estate of Matrimony**

Charlie Oxendine (c) and Doshia Miller (c)  
and that you make return of the same, duly certified under your hand, to the County Judge, aforesaid.

Witness, my name as County Judge, and the seal of said Court, at the Courthouse in \_\_\_\_\_, this 8 day of January, A. D. 1934  
seal John P. Baker, County Judge.

CERTIFICATE OF MARRIAGE

I Certify, that the within named Charlie Oxendine and Doshia Miller were by me, the undersigned, duly united in the Holy Estate of Matrimony, by the authority of the within License. Done this 8 day of January, A. D. 1934 at St. Augustine, Florida.

Witness Julia C. Callahan John P. Baker  
Witness \_\_\_\_\_ County Judge  
MINISTER OR LEGALLY AUTHORIZED OFFICER

Returned this \_\_\_\_\_ day of \_\_\_\_\_, A. D. 19\_\_\_\_, and recorded in Marriage Book \_\_\_\_\_, Page \_\_\_\_\_, John P. Baker, County Judge.  
seal

IMPORTANT—THIS LICENSE SHALL BE RETURNED WITHIN TEN DAYS AFTER MARRIAGE IS SOLEMNIZED. THERE IS NO REFUND OF THIS MARRIAGE UNTIL LICENSE IS RETURNED TO THE COUNTY JUDGE WHO ISSUED SAME.

“Charlie Oxendine.” Florida Marriages.  
Marriage of Charlie Oxendine and Doshia Miller.  
January 8, 1934 in Saint Augustine, FL.

## POPULATION CENSUS 1935

St. Johns COUNTY

NAME	ADDRESS	HOUSE OR CITY LIMITS	AGE		RACE	RELATION TO FAMILY	PLACE OF BIRTH— IF IN U. S. GIVE NAME OF STATE, OTHERWISE NAME OF COUNTRY	EDUCATION	OWNER OR RENTER	OCCUPATION
			MALE	FEMALE						
Carmas	J. R.	65 Central An	X	37	White	H	Florida H.	High	Rent	Fisherman
Carmas	J. R. Mrs	"		23	X	W	S.C.	8		Housewife
"	Alpha	"	X	6	"	S	Fla	1		
"	Mary	"		4	"	S	"	"		
Custard	Jack	"	X	26	"	H	Fla	High		Bookman
"	Mokey	"		31	X	W	S	7		Housewife
Thomas	Bill	"	X	29	"	H	Fla	11		W
"	Murrie	"		24	X	W	"	11		Club Host
Marcus	Ed	"	X	59	"	H	Mich	H		Fisherman
"	Mary	"		41	X	W	Fla	8		Housewife
Gippen	Martha	68		67	"	H	Fla	"	Own	Retired
"	Josephine	"		53	X	W	N. Y.	"		Housewife
Cass	Clay	"	X	55	Colored	H	Fla	3	Rent	Wash. Man Alton
"	Jack	"		56	X	W	Fla	20		Housewife
Williams	Oris	"	X	37	"	H	S.C.	2		Radio Shop
"	Bessie	"		32	X	W	S.C.	2		Housewife
Salmon	Samuel	67	X	50	"	H	Fla	"		L. R. R. Station
"	Gertrude	"		60	X	W	"	"		Housewife
Goff	John	71		61	White	H	Fla	6		Religion
Goff	Viola	"		27	X	W	Fla	6	Owner	Religion
"	John	"		2	"	"	Fla	"		
Gendrie	Charles	73	X	37	"	H	Fla	6	Rent	R.R.
"	Bessie	"		24	X	W	S.C.	7		Religion
Jackson	Andrew	"	X	26	"	H	Fla	6		Religion
"	Lucy	"		27	X	W	Fla	7		Housewife
Opfer	Arthur	78	X	45	"	H	S.C.	5	Rent	Housewife
"	Leila	"		40	X	W	"	"		"
"	Henry	"	X	23	"	S	"	3		"
"	Alphonse	"		16	"	S	"	3		"
Williams	Mamie	"	X	28	"	W	Fla	2		"
Schepke	J. C.	57	X	54	"	H	Fla	8	Rent	Religion
Schepke	Bessie	"		48	X	W	"	"		Housewife
Schepke	W. M.	59	X	54	"	H	Fla	8	Own	R.R. Mechanic
"	Bessie	"		55	X	W	Fla	8		Housewife
Wiles	A. M. G.	60 Central An		70	"	H	S.C.	10	Own	Religion
"	Augusta	"		65	"	W	S.C.	29	Own	Religion
Chansen	John	"	X	34	"	H	Fla	High		Bookman
"	Paula	"		22	X	W	Fla	7		Housewife
Amgauer	Anter	"	X	48	"	H	Germany	11		Housewife
"	Ann	"		32	X	W	Fla	11		Housewife
"	Nellie B.	"		15	"	D	"	7		
"	Ernie	"		16	"	D	"	6		
McDonnell	Sam	"	X	30	"	H	Fla	7		Bookman
"	Kenneth	"	X	12	"	S	Fla	6		
"	Mrs S.	"		30	X	W	"	"		Restaurant
Ames	Abraham	62	X	24	"	H	"	"		
"	Mamie	"		24	X	W	"	"		
"	John	"		16	"	"	"	"		
Ames	John	"	X	17	"	H	"	"		
Ames	A. C.	61		70	"	H	S.C.	10	Rent	Housewife

Irish - 50

white 22 =

15 12 10 8 6 4 2

black 22 =

15 12 10 8 6 4 2

9-6

"Charlie Oxendine." 1935 Florida State Census.  
 Oxendine employed as a laborer in the railroad industry.  
 Saint Augustine, FL.



PERSONAL DATA										EDUCATION										PLACE OF BIRTH										RESIDENCE, APRIL 1, 1940										PERIODS 14 YEARS OLD AND OVER-EMPLOYMENT STATUS									
1	2	3	4	5	6	7	8	9	10	11	12	13	14	15	16	17	18	19	20	21	22	23	24	25	26	27	28	29	30	31	32	33	34	35	36	37	38	39	40										
NAME										EDUCATION										PLACE OF BIRTH										RESIDENCE, APRIL 1, 1940										PERIODS 14 YEARS OLD AND OVER-EMPLOYMENT STATUS									
1	102	9								Male	W	24	2	0	7						Florida										Same House																		
2	103	0	100							Male	M	24	5	0	6						South Carolina										Same House																		
3	104	0	100							Male	F	24	7	1	5						Florida										Same House																		
4	105	29	0	200						Female	M	24	7	0	4						South Carolina										Same House																		
5	106	0	100							Male	F	24	1	1	0	3					Florida										Same House																		
6	107	0	100							Male	M	24	3	3	0	4					Florida										Same House																		
7	108	0	100							Male	F	24	2	5	1	0	4				Florida										Same House																		
8	109	0	100							Male	M	24	1	1	1	0	5				Florida										Same House																		
9	110	0	100							Male	M	24	2	1	1	0	6				Florida										Same House																		
10	111	0	100							Male	F	24	2	1	1	0	6				Florida										Same House																		
11	112	0	100							Male	M	24	2	1	1	0	6				Florida										Same House																		
12	113	0	100							Male	M	24	2	1	1	0	6				Florida										Same House																		
13	114	0	100							Male	M	24	2	1	1	0	6				Florida										Same House																		
14	115	0	100							Male	F	24	2	1	1	0	6				Florida										Same House																		
15	116	0	100							Male	F	24	2	1	1	0	6				Florida										Same House																		
16	117	0	100							Male	F	24	2	1	1	0	6				Florida										Same House																		
17	118	0	100							Male	F	24	2	1	1	0	6				Florida										Same House																		
18	119	0	100							Male	F	24	2	1	1	0	6				Florida										Same House																		
19	120	0	100							Male	F	24	2	1	1	0	6				Florida										Same House																		
20	121	0	100							Male	F	24	2	1	1	0	6				Florida										Same House																		
21	122	0	100							Male	F	24	2	1	1	0	6				Florida										Same House																		
22	123	0	100							Male	F	24	2	1	1	0	6				Florida										Same House																		
23	124	0	100							Male	F	24	2	1	1	0	6				Florida										Same House																		
24	125	0	100							Male	F	24	2	1	1	0	6				Florida										Same House																		
25	126	0	100							Male	F	24	2	1	1	0	6				Florida										Same House																		
26	127	0	100							Male	F	24	2	1	1	0	6				Florida										Same House																		
27	128	0	100							Male	F	24	2	1	1	0	6				Florida										Same House																		
28	129	0	100							Male	F	24	2	1	1	0	6				Florida										Same House																		
29	130	0	100							Male	F	24	2	1	1	0	6				Florida										Same House																		
30	131	0	100							Male	F	24	2	1	1	0	6				Florida										Same House																		
31	132	0	100							Male	F	24	2	1	1	0	6				Florida										Same House																		
32	133	0	100							Male	F	24	2	1	1	0	6				Florida										Same House																		
33	134	0	100							Male	F	24	2	1	1	0	6				Florida										Same House																		
34	135	0	100							Male	F	24	2	1	1	0	6				Florida										Same House																		
35	136	0	100							Male	F	24	2	1	1	0	6				Florida										Same House																		
36	137	0	100							Male	F	24	2	1	1	0	6				Florida										Same House																		
37	138	0	100							Male	F	24	2	1	1	0	6				Florida										Same House																		
38	139	0	100							Male	F	24	2	1	1	0	6				Florida										Same House																		
39	140	0	100							Male	F	24	2	1	1	0	6				Florida										Same House																		
40	141	0	100							Male	F	24	2	1	1	0	6				Florida										Same House																		

"Charlie Oxendine." 1940 United States Census.

Oxendine (line 35), his wife Doshia and two nephews in Saint Augustine, FL.

Employed as a battery helper on the railroad.



More goods are bought and sold through  
the Classified Business Lists of the Direc-  
tory than any other medium on earth.

Osteen Richd welder Henry W Jones r30 West av  
Osteen Wm R (Mary N) h24 Johns  
Ott Chester B meatctr Penny Profit Store r54 Carrera  
Oviatt Abby M r57 Water  
Oviatt Lorenzo P musician h57 Water  
Owen Cora (wid Oscar) h28 Arenta av  
Owens Chas W (c; Lottie) porter h76 Park pl  
Owens Essie (c) cook h89b DeHaven  
Owens Geo (c) lab h Denmark Qtrs  
Owens Henry (c) student r91 Park pl  
Owens John (c; Josephine) driver New Way Taxi h19 Bern-  
ard av  
Owens Lee C (Violet) member County Board of Comnrs h  
White (Anastasia Island)  
Owens Lottie (c) maid Flagler Hosp r76 Park pl  
Owens Mary (c) maid r19 Bernard av  
Owens Mary J (c) cook h91 Park pl  
Owens McCray (c; Emma) porter r89b DeHaven  
Owens Peggy nurse 266 W King h do  
Oxendine Chas (c; Doshia) clnr h73 Central av  
Oxendine Ola (c) h47 Christopher  
Oxendine Ola P (c) student r47 Christopher  
Oxley Elias J (Margt A) emp FEC Ry Co h137 Ovieda  
Ozorozy Julius J barber James V Caruso r Mill Creek rd  
Pablo Cafeteria (Avery T Ray) 16 Marine  
Pacetti Agnes Indrywkr StAugustine Soft Water Laundry r23  
Palmer av  
Pacetti Anna r29 Charlotte  
Pacetti Annie C Mrs h1 Pine  
Pacetti Benj A (Beatrice) brklyr h158 Dixie hwy  
Pacetti Beverly clk Langston Office Supply Co r226 StGeorge  
Pacetti Camelo (Nellie) brklyr h13 Perpall  
Pacetti Chas A (Esther) plstr h17 Perpall  
Pacetti Clifford S (Emma) brklyr h10 Nelmar av  
Pacetti Clinton S (Inez) brklyr h141 San Marco av  
Pacetti Drayton (Gertrude) city policemn r20 Perpall  
Pacetti Drew (Agnes) Indrywkr StAugustine Soft Water  
Laundry r23 Palmer av  
Pacetti Dorothy clk North City Bakery r83 San Marco av  
Pacetti Elmer F (Marie) hlpr StAugustine Gas Co r Mill  
Creek rd  
Pacetti Emery J (Virginia V) distr h25 May  
Pacetti Eugenia beauty opr Gay's Beauty Shop r Mill Creek  
rd  
Pacetti Fredk J (Verley) bkpr Model Land Co h60 San Marco  
Pacetti Gabriel J h7 StAndrews ct  
Pacetti Godfrey L (Lenore G) brklyr h7 Myrtle av  
Pacetti Helen Mrs waiter r22 West av  
Pacetti Herbert P (Marie) fishermn h15 StLouis av  
Pacetti Irene tchr r226 StGeorge  
Pacetti Jos E (Macy) dep County Sheriff h226 StGeorge  
Pacetti Lorna student r24 Central av  
Pacetti Lucie M asst to County Tax Assessor r7 StAndrews ct  
Pacetti Macy Mrs tchr West Augustine Sch h226 StGeorge  
Pacetti Marie Mrs beauty opr Florence Beauty Shop h15 St  
Louis av  
Pacetti Mildred H dep clk Circuit Court r7 StAndrews ct  
Pacetti Raymond chauf County Sheriff

“Charlie Oxendine.” Saint Augustine City Directory, 1940.  
Oxendine listed as a cleaner.

No Image  
Text-only collection

Purchase a Copy

Add alternate information

Report issue

Name: C Oxendine

Birth Date: Apr 1898

Death Date: Dec 1943

Claim ID: D079816

SSN: 718073374

Industry: Railroad

[Save & create tree](#) [Cancel](#)

**Source Citation**  
The National Archives at Atlanta; Morrow, Georgia; *Records of the Railroad Retirement Board, 1934 - 1987*; Record Group Number: 184

**Source Information**  
Ancestry.com. *U.S., Railroad Retirement Pension Index, 1934-1987* [database on-line]. Lehi, UT, USA: Ancestry.com Operations, Inc., 2017.

**Original data:** Records of the Railroad Retirement Board, 1934-1987. Record Group 184. The National Archives at Atlanta, Morrow, Georgia.

**Description**  
Have a relative that worked for a railroad? Find out more about their life in this collection! [Learn more...](#)

“Charlie Oxendine.” Georgia Records of the Railroad Retirement Board.  
Updated with notice of death in December of 1943.

Interment in the St. Augustine National Cemetery  
To—The Quartermaster General, Washington, D. C.

NAME			RANK	COMPANY	REGIMENT OR VESSEL			DIVISION, IF WORLD WAR SOLDIER
					Number	State	Arm	
Oxendine, Charlie <i>asn. 4184137</i>			Pvt.	A	546	<i>Fla.</i>	Engineers	<i>none</i>

DATE OF DEATH			DATE OF INTERMENT			GRAVE MARK		REMARKS
Month	Day	Year	Month	Day	Year	Section	Grave No.	
Dec.	5	1943	Dec.	13	1943	D	31	<p>Date of discharge and number of Pension Certificate, Disinterments, etc.  <i>Inducted 4 aug. 1918</i>                      Discharged July 1, 1919. <i>Hon.</i>                      Authority - Telegram from OQMG. SPQYA                      293 Oxendine, Charlie(4184137) Dec 7,                      1943. <u>Latin Cross desired on headstone.</u> </p>

*No record of subsequent service.*

Shipping point for headstones St. Augustine, Florida.

MAR 7 1944 TATE, GA.  
17801894

3-2550

(See Instructions on Reverse Side)

5 2 8 2 0 9 5 0 0 1 9

*James W. Dell*  
Superintendent.

“Charlie Oxendine.” Cemetery Interment Control Forms.  
Saint Augustine National Cemetery.





“Charlie Oxendine.” Find a Grave Headstone.  
Saint Augustine National Cemetery.



# Verle A. Pope

AGENCY, INC.  
REAL ESTATE and INSURANCE  
94 Charlotte cor. Treasury St. VA lley 9-9061



Owens Ada B Mrs maid Sea Wall Mtr Lodge Inc r76 Park pl  
Owens Bertha Mrs maid h76½ Washington  
Owens Chas W (Ada B) porter FEC h76 Park pl  
Owens Frances G Mrs slswn Wm W Owens r31 Sanford  
Owens Jas B (Frances G) asst signalmn FEC h31 Sanford  
Owens John I (Annie B) mgr Minute Man Cab h25a Pine  
Owens Mary L beauty shop 25c Pine h do  
Owens Mildred Mrs h39 Weeden  
Owens Ocie S (wid Geo) h McLaughlin  
Owens Rubin L clk State Arsenal r27 Palmer av  
Owens Wilhelmenia hsemother D&B Sch r do  
Owens Wm W (Ruby T) gro 27 Palmer av h do  
Oxendine Doshia (wid Chas) h73 Central av  
Oxendine Ella M Mrs h35 Christopher  
Oxendine Eug (Rose M) emp Bailey Dunbrik h42 Weeden  
Oxendine John W (Petrona F) driver Matanzas Furn r107  
Lincoln  
Oxendine Lugene driver Bailey Dunbrik r93 Oneida  
Oxendine Ola G h47 Christopher  
Paasche Alf G (Helen B) supvr Southern Matl Co h357  
Varella av (SR)  
Paasche Helen B Mrs rn East Coast Hosp r357 Varella av  
(SR)  
Pace Anita H Mrs sten FEC r52 Charlotte  
Pace Charlie jr (Maxie L) lab King Lbr & Sup h438 W King  
Pace Robt K (Anita H) USN r52 Charlotte  
Pacetti Agnes Mrs (Becky's Shop) r202 Masters dr  
Pacetti Chas A (Esther M) h5 Institute  
Pacetti Clinton S (Inez M) h19 St Louis av  
Pacetti Clyde J (Rachel J) formn Pan American h5 Hil-  
dredh av  
Pacetti Donald A (Mertha) glazier Service Paint & Glass h16  
Coquina av (DS)  
Pacetti Donald R (Shirley B) hlpr FP&L h283 Monterey  
av (SR)  
Pacetti Drayton S (Gertrude L) brklyr Godfrey L Pacetti h20  
Perpall  
Pacetti Drew T (Agnes) bull dozer opr h202 Masters dr  
Pacetti Ella M Mrs dispr Bass Cab r90 Julia  
Pacetti Emery J (Victoria G; Marty's Restaurant) h35 May  
Pacetti Emmett W (Virginia R; Emmett W Pacetti &  
Associates) h317 StGeorge  
**PACETTI EMMETT W & ASSOCIATES** (Emmett W Pa-  
cetti), Registered Engineer, Civil Engineering, Land  
Surveying, Drafting, Drainage Layouts and Plans, Gov-  
ernment Permits, Topographic Maps, 58 Hypolita, Tel  
Valley 4-1610 (See Yellow Page 37)  
Pacetti F Rodney (Joyce M) mech StAug Marina r60 San-  
Marco av  
**PACETTI FRED J** (Verley V; Service Paint & Glass Co),  
Office 139 StGeorge, Tel Valley 9-8265, h60 SanMarco  
av, Tel Valley 9-3083

## The EXCHANGE BANK OF ST. AUGUSTINE

Locally Owned and Managed  
24-28 CATHEDRAL PLACE PHONE VA lley 9-9086  
Member of the Federal Deposit Insurance Corporation



## GINTY PLUMB- ING & HEAT- ING

Prompt  
Service

All  
Work  
Guaran-  
teed

12  
Williams  
St.

PHONE  
VA lley  
9-2429



“Charlie Oxendine.” Saint Augustine City Directory, 1960.  
His widow Doshia listed.